

FRIENDS *of*
OCEAN
ACTION



Tuna 2020 Traceability Declaration



The Sustainable Supply Chain Initiative | SSCI

An Introduction

The Complex Landscape



As of March 2020, they have 262.

Average of 20 new standards per year.

ITC TWEET FROM 2012 – 79 voluntary sustainability [#standards](https://standardsmap.org), schemes & retailer codes of conduct are on <http://standardsmap.org>

Sustainable Supply Chain Initiative (SSCI)



Hosted by The Consumer Goods Forum (CGF)

- ▶ CEO-led industry association with around 400 members (retailers and manufacturers) from multinational to SMEs



Benchmark of choice designed for third-party sustainability standards

- ▶ Modeled on the success of the Global Food Safety Initiative (GFSI)



Clear guidance on credible standards

- ▶ Sets realistic expectations to recognise those programs that meet industry expectations

Global Benchmarking Landscape: Where is SSCI positioned?



Food Safety

**Social
(Phase II: Environment)**

Environment

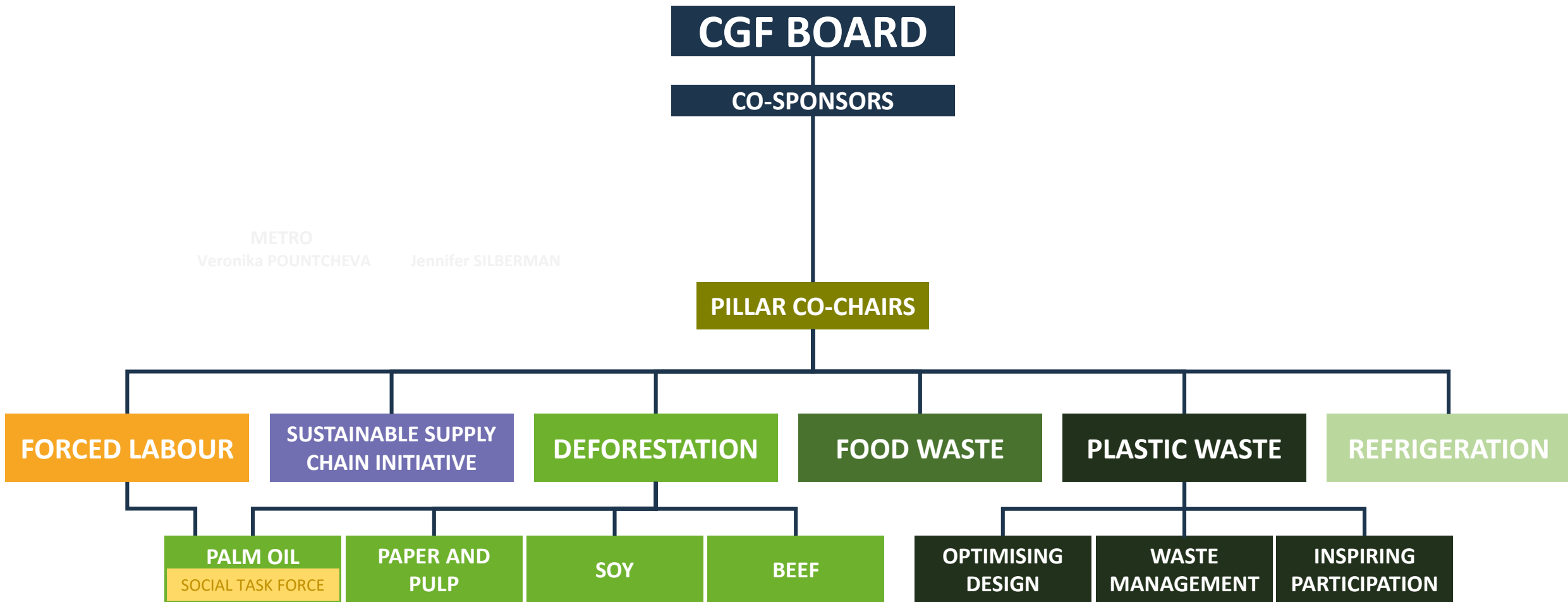
Governance and Operational Management | Scheme Management

CGF Initiatives

WORKING TOGETHER EFFICIENTLY FOR POSITIVE CHANGE



Sustainability @ CGF



CGF Board of Directors



Retailer College

Özgür TORT
Migros Ticaret



Manufacturer College

Emmanuel FABER
Danone





The Sustainable Supply Chain Initiative (SSCI) is an **independent benchmarking process**, exclusively designed for third-party auditing and certification schemes.

SSCI will recognise sustainability standards that complete the process and **align with all benchmarking criteria**. SSCI aims to **provide transparency** and **build trust** in sustainability standards worldwide.

Where does SSCI fit in?



Supply Chain Risk
Management

Supplier Mapping

Identify Risks at Supplier
Level

Follow-up action

In-house audit

Supplier Capacity Building

Supplier Self-Assessment

Timeline for improvement

3rd party audit schemes

Exclusion of supplier

...

...

SSCI
Benchmark



SSCI Scopes: Sectoral Relevance

Processing / Manufacturing



Social compliance:
Processing/Manufacturing

Launched in 2019

Open for Schemes to
Benchmark

Primary Production



Social compliance:
Agriculture/Aquaculture/

Under development

At-Sea Operations



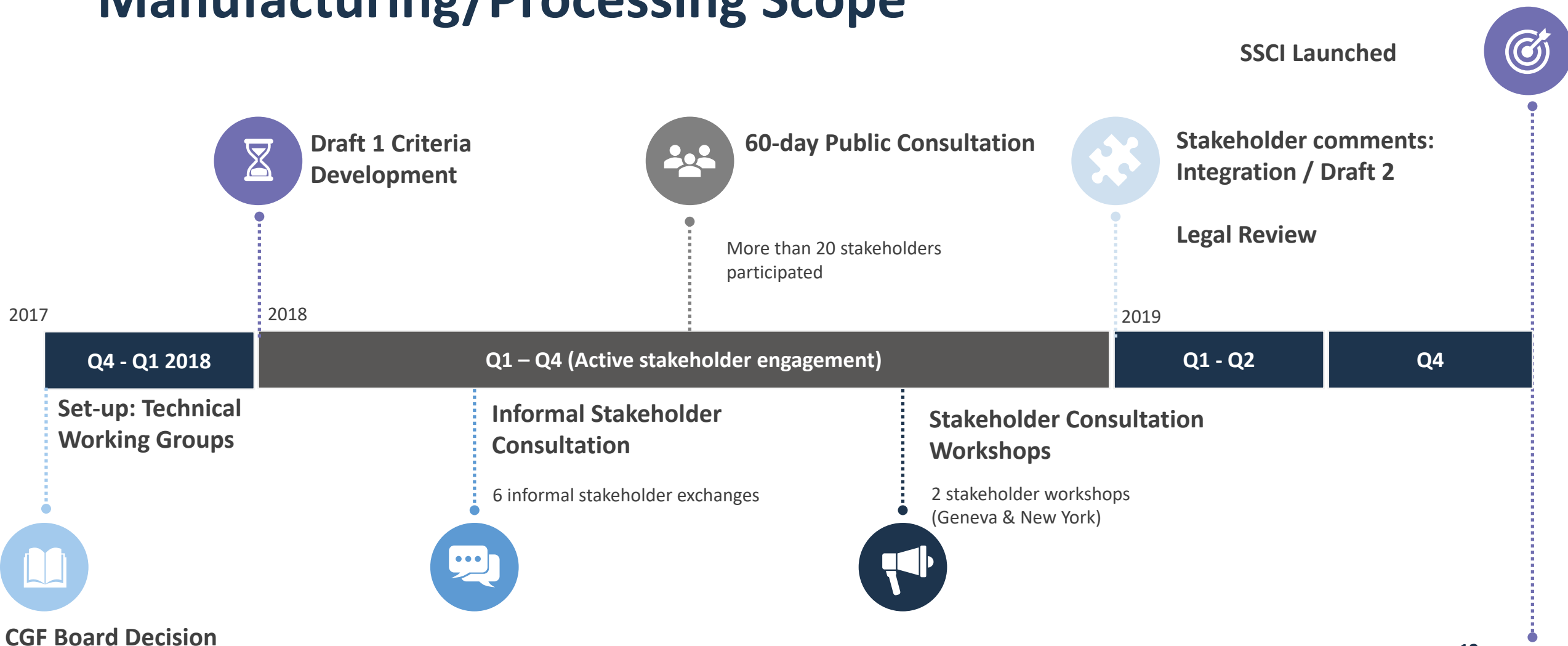
Seafood-specific scope -
In collaboration with GSSI



Under development

→ Environmental Compliance Benchmarks will be developed in Phase II of SSCI

SSCI Development – Manufacturing/Processing Scope



SSCI Steering Committee



CEOs/CGF Board co-sponsors

SSCI co-chairs

Sainsbury's



What we've accomplished

**Benchmark of
Choice that
meets industry
expectations**



**2 years of
discussions,
dialogues, &
engagement**

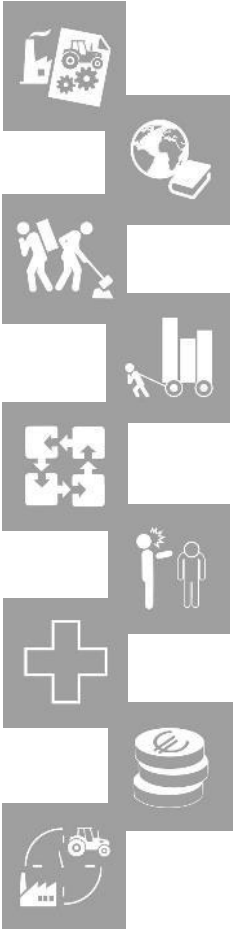


**72 social criteria
64 mgmt. criteria**



**Drove the
conversation on
social compliance
forward**

SSCI Social Criteria – Manufacturing/Processing Scope



- ▶ Management Systems
- ▶ Compliance with international labour standards and national legislation
- ▶ No forced, bonded and prison labour
- ▶ No child labour
- ▶ Freedom of association and effective recognition of the right to collective bargaining
- ▶ Discrimination, harassment and abuse
- ▶ Health and safety
- ▶ Building and fire safety
- ▶ Wages, benefits and terms of employment
- ▶ Working hours
- ▶ Grievance mechanism
- ▶ Business Ethics

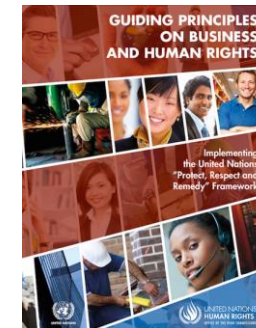
SSCI Criteria

- ❑ Social
- ❑ Scheme Management



SSCI Social Criteria

- ▶ Social Compliance Criteria to ensure all relevant topics are covered by a scheme.
- ▶ International references and alignment with UNGP, ILO, OECD guidance etc.

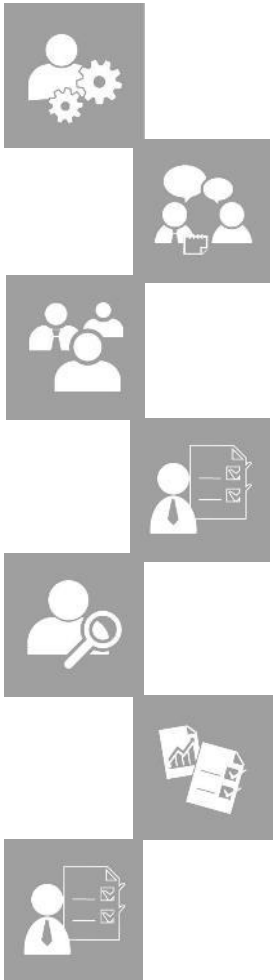


Select SSCI Forced Labor Criteria



3.04	The standard shall require that no fees or related costs are charged (directly or indirectly, in whole or in part) to applicants and workers for services directly related to recruitment that may lead to situations of forced or compulsory labour.
3.05	The standard shall require that no monetary deposits, financial or collateral guarantees or personal possessions are demanded as a condition of employment.
3.06	The standard shall require that workers are not held in debt bondage or forced to work for an employer, or any other entity to pay off debt.
3.07	The standard shall require that if the possibility of advances and loans to workers is provided, a written policy about the terms and conditions is in place that is communicated to workers in an understandable manner. These terms (and related interest rates) shall not be used to bind workers to employment.
3.08	The standard shall require that no personal documents or any valuable possessions, such as identity or immigration papers, work permits or travel documents are confiscated, retained, nor shall workers be required to lodge them with the employer and/or recruiter.

SSCI Scheme Management Criteria



Governance

- Scheme Governance
- Scope and Objectives
- Integrity Programme
- Logo Use and Claims
- Standard Setting and Maintenance

Operational Management / System

- Accreditation
- Relationship with Audit Firms
- Auditor Competence
- Audit Protocol
- Audit Reporting
- Follow-up Action
- Data Management

SSCI Criteria

- ☐ Social
- ☐ Scheme Management



SSCI Scheme Management Criteria

- ▶ Ensure that schemes **operate in a credible manner**
- ▶ International references and alignment with GFSI, GSSI, ISEAL Assurance Code, ISO(17021) etc.



Select SSCI Scheme Management Criteria



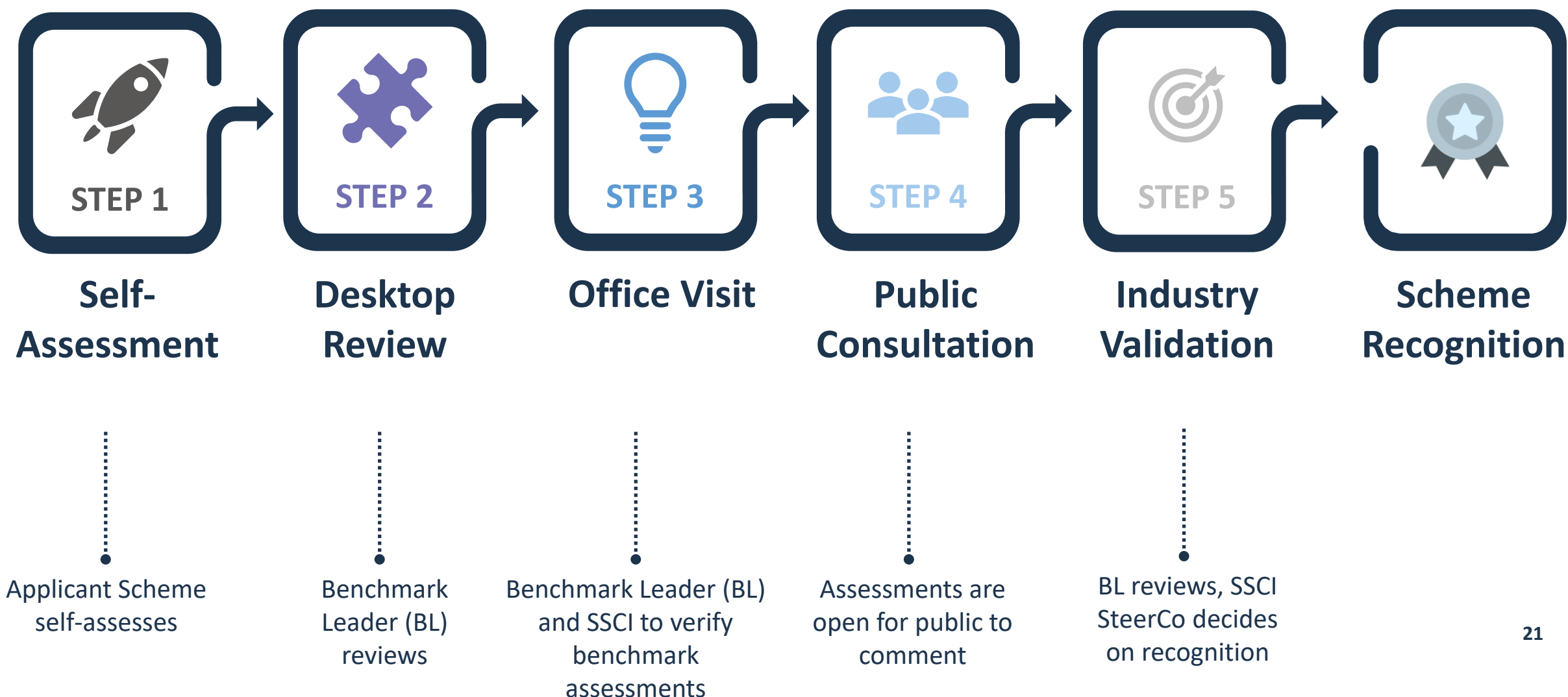
Auditor Qualifications

B3.02	<p>The lead auditor performing audits for the audit firm shall have the following experience:</p> <ul style="list-style-type: none">- a minimum of 1-year experience in social compliance auditing and a minimum of 100 social compliance audit daysOR- a minimum of 2 years' experience in any other type of auditing and 150 audit days of which a minimum of 50 are social compliance audit days. Other audit days may include management system, health and safety, labour inspections, investigations, audit components.
-------	---

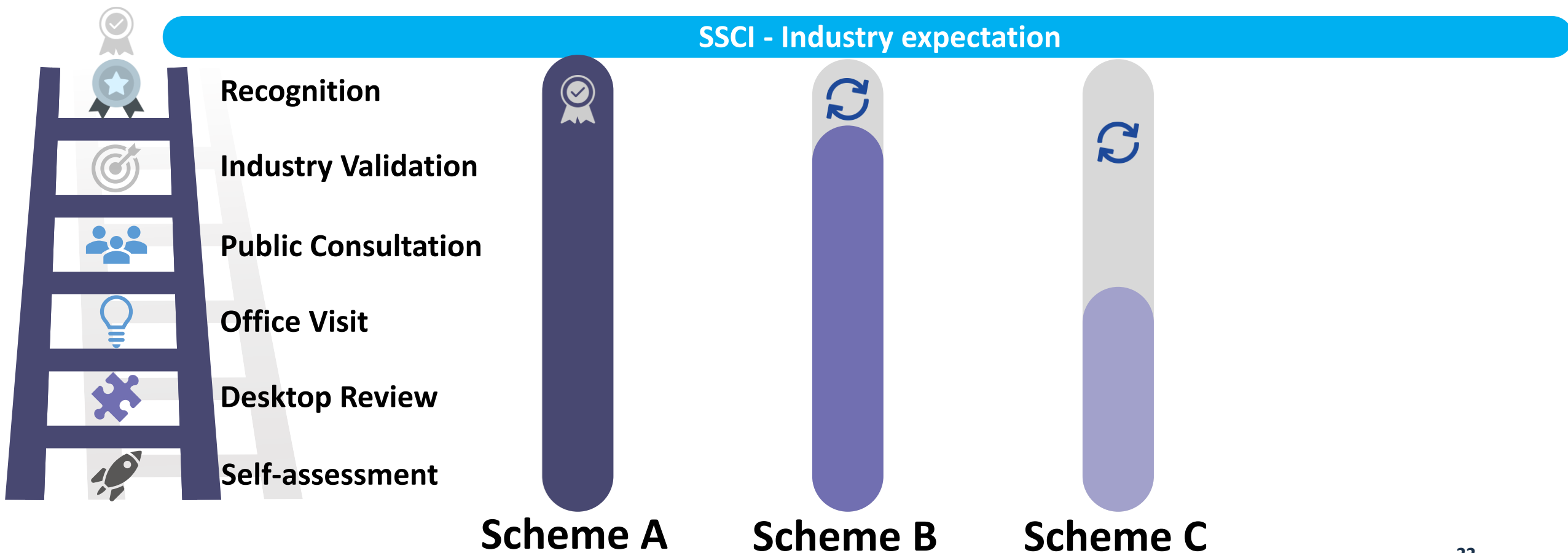
Worker Interview Procedures

B4.11	<p>The Scheme Owner shall define requirements for the execution of worker interviews that audit firms are required to implement. The requirements include at a minimum that:</p> <ul style="list-style-type: none">- Workers shall be interviewed both individually and in groups- Workers shall be interviewed in a confidential setting without any supervision or management personnel present- Information provided by workers shall be processed in a non-attributable manner- Workers shall be interviewed in their own language- The selection of workers shall consider that they are representative of the factory, by characteristics such as gender, age, length of service and origin- In any event, management, supervisors or their representatives shall not act as interpreters
-------	--

SSCI Benchmark Process



Progress Step: Pathway to Recognition



What SSCI is NOT about



SSCI is NOT:

- ... another social compliance standard
- ... an audit sharing platform
- ... a traceability solution
- ... recognising company approaches
- ... defining a responsible sourcing strategy
- ... judging other assurance or supplier engagement approaches



At Sea Operations: Criteria development

Key areas under consideration



- **Living conditions on vessels**
- **Recruitment agencies & forced labour risks**
- **Working hours**
- **Large vs. small fleet operations**
- **Mobile fleets and multiple jurisdictions**

Provisional Timeline



A Call to Action



- **Take part in the Public Consultation & Stakeholder Events**
 - Meet with us at the Boston Seafood Show (March 15-17)
 - Meet with us at the Brussels Seafood Show (April 21-23)
 - Public Consultations TBA
- **Encourage existing schemes to undergo Benchmarking for Processing/Manufacturing scope**
 - Understand the gap between expectations & performance
 - Recognised schemes will be aligned with CGF Priority Industry Principles on Forced Labour
- **Consider joining our Initiatives**
 - For more information about GSSI – secretariat@ourgssi.org
 - For more information about SSCI/CGF – ssci@theconsumergoodsforum.com

Thank you!

QUESTIONS?

Didier BERGERET | Director, Social Sustainability & SSCI
d.bergeret@theconsumergoodsforum.com

Thomas VAN HAAREN | Senior Manager, Sustainable Supply Chain Initiative | SSCI
t.vanhaaren@theconsumergoodsforum.com

Sairindri CHRISTISABRINA | Coordinator, Sustainable Supply Chain Initiative | SSCI
s.christisabrina@theconsumergoodsforum.com